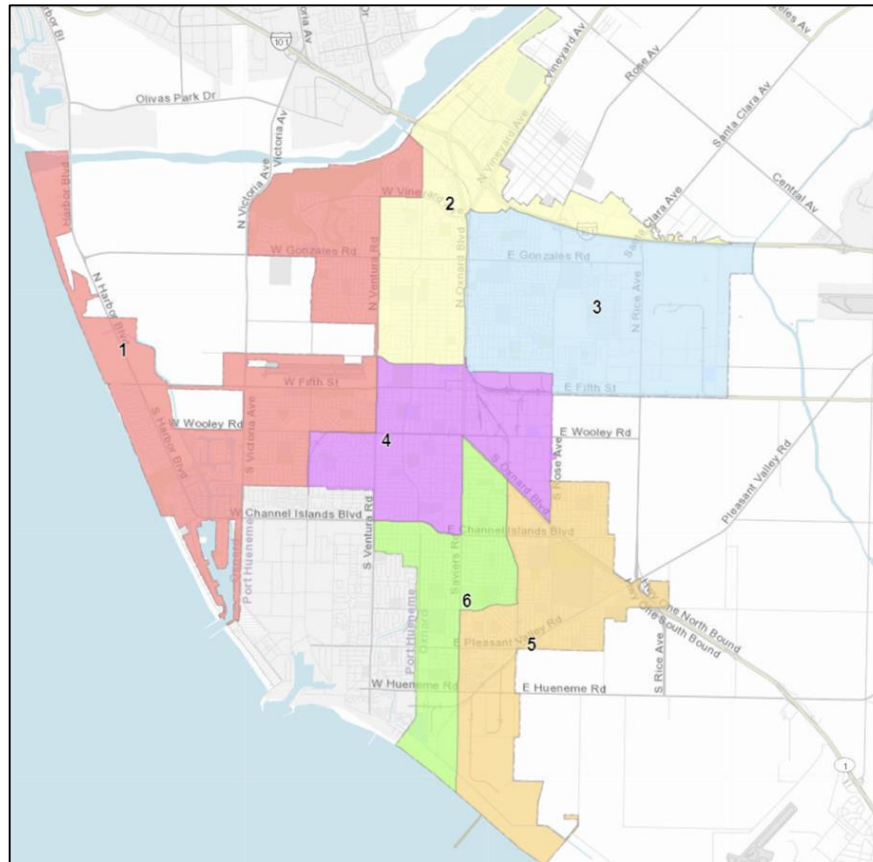


City of Oxnard



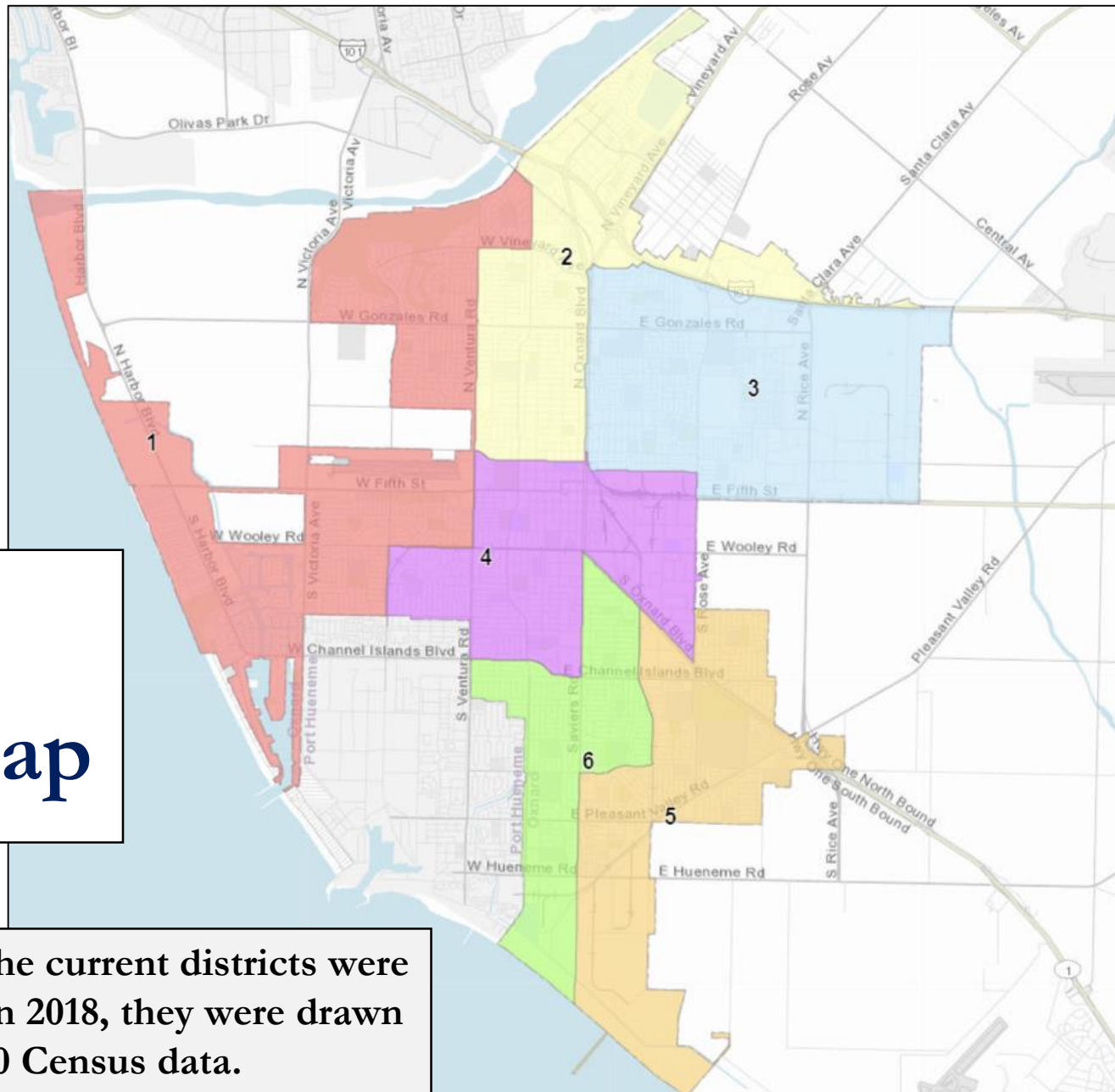
Redistricting Public Hearing

September 30,
2021

Kristen Parks, Consultant
National Demographics Corporation

Current District Map

Though the current districts were adopted in 2018, they were drawn using 2010 Census data.



Redistricting Timeline

Date	Action
July 29, 2021	Public Hearing #1 to introduce redistricting process
August 12, 2021	Release of official 2020 Census data
September 20, 2021	Release of California official redistricting data
September 30, 2021	Public Hearing #2 on “communities of interest”
October - November	Time for the public to draw & submit maps
December 6, 2021	Public Hearing #3 to discuss draft maps
January 22, 2022	Public Hearing #4 to discuss draft and revised maps
February 24, 2022	Public Hearing #5 to select map and consider first reading of ordinance to adopt final map
April 17, 2022	Legal deadline to adopt new map
November 8, 2022	First election with new map

Legal Requirements & Other Goals

1. Federal Law

- ✓ Ensure equal population
- ✓ Comply with federal Voting Rights Act
- ✓ Prevent racial gerrymandering

2. California Law

1. Ensure geographic **contiguity**
 2. Minimize division of neighborhoods & **“communities of interest”**
 3. Create easily identifiable boundaries
 4. Maintain **compactness**
- ✓ Do not “favor or discriminate against a political party”

3. Other Goals

- Minimize changes to election cycles
- Respect voters’ choices
- Preserve core of existing districts
- Anticipate future growth

Do not bypass a nearby population to take in a more distant population

Non-Adjusted 2020 Population Data

District	1	2	3	4	5	6	Total
2020 Census Population (Raw)	33,075	39,039	32,371	32,523	32,761	32,294	202,063
Deviation from ideal*	-602	5,362	-1,306	-1,154	-916	-1,383	6,745
% Deviation	-1.79%	15.92%	-3.88%	-3.43%	-2.72%	-4.11%	20.03%

* about 33,677 people

Defining Neighborhoods



What is your neighborhood?

What are its geographic boundaries?

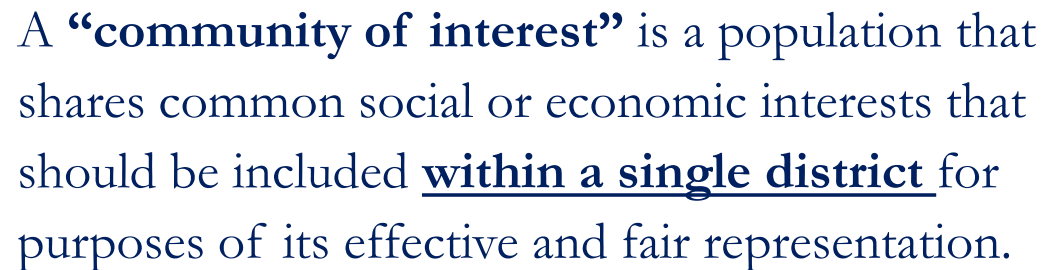
Examples of physical features defining a neighborhood boundary:

- Natural neighborhood dividing lines, such as highway or major roads, rivers, canals and/or hills
- Areas around parks or schools
- Other neighborhood landmarks

In the absence of public testimony, planning records and other similar documents may provide definition.

Beyond Neighborhoods: Defining “Communities of Interest”

Under California Elections Code, “community of interest” has a very specific definition in the context of redistricting:



A “community of interest” is a population that shares common social or economic interests that should be included within a single district for purposes of its effective and fair representation.

Definitions of “communities of interest” do **not** include relationships with political parties, incumbents, or political candidates.

What Defines YOUR Community?

Ask yourself...

What brings us together?

- Common social or economic interests
- Shared characteristics or experiences
- Similar issues or impacts of city policies

+

Where are we?

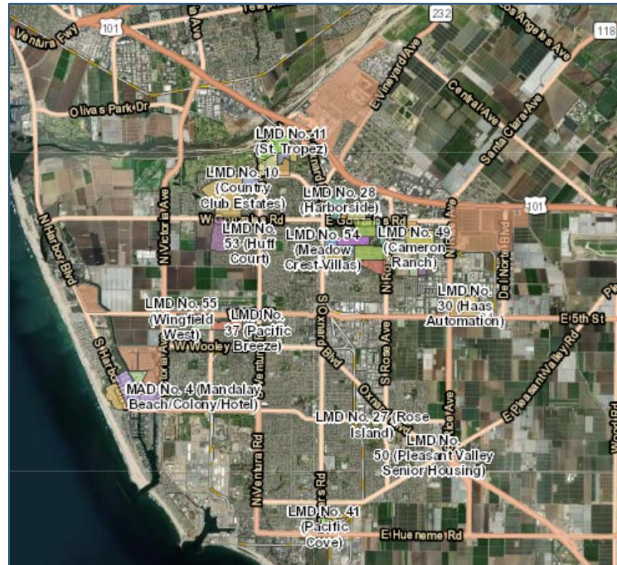
- Physical boundaries, such as highways or major roads, waterways, hills, etc.
- Areas around parks, schools, or other landmarks

→ Would my community be best represented within a single district?

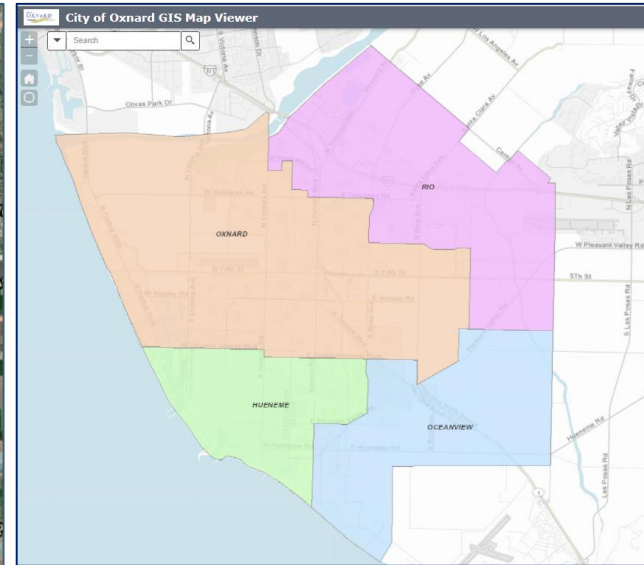
Possible Communities of Interest



General Plan Areas



Assessment Districts



School Districts

Public Mapping Tools

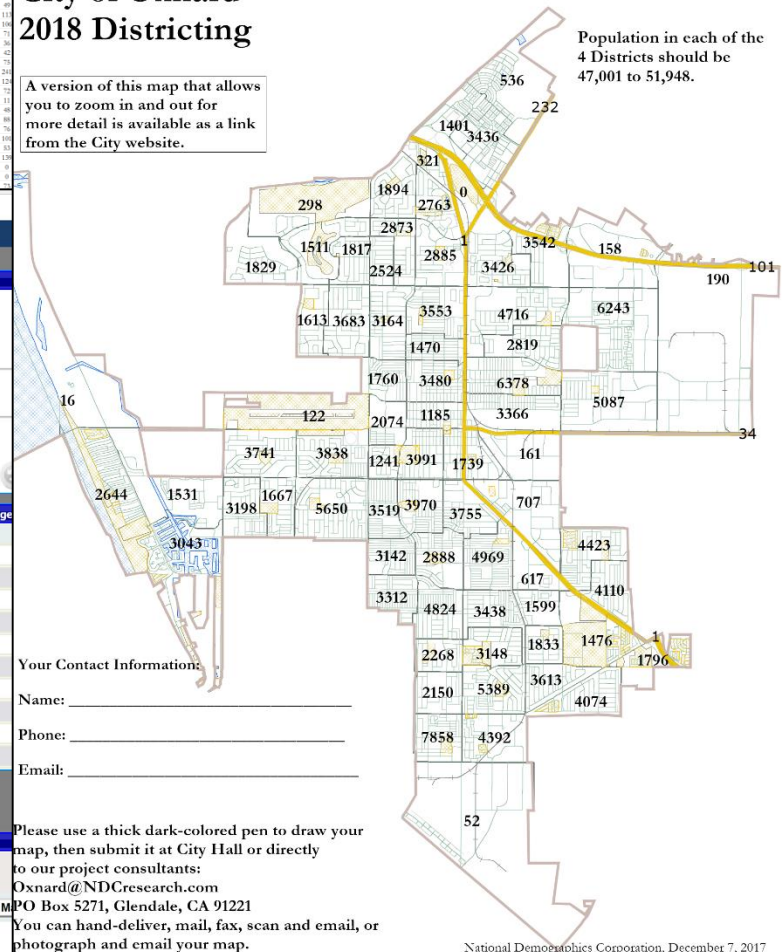
- Use the paper map, the online tool, or any other map
- Draw your community of interest, draw the district you want for your area, or draw an entire citywide map

Excel spreadsheet showing demographic data for the City of Oxnard. The spreadsheet includes columns for various demographic categories such as Total Population, Hispanic Origin, and Age Groups. The data is organized into rows representing different geographic areas or census tracts.

City of Oxnard 2018 Districting

A version of this map that allows you to zoom in and out for more detail is available as a link from the City website.

Population in each of the 4 Districts should be 47,001 to 51,948.



Your Contact Information:

Name: _____

Phone: _____

Email: _____

Please use a thick dark-colored pen to draw your map, then submit it at City Hall or directly to our project consultants:
Oxnard@NDCresearch.com
P.O. Box 5271, Glendale, CA 91221
You can hand-deliver, mail, fax, scan and email, or photograph and email your map.

Maptitude Online Redistricting

Plan Manager | Plan Settings | Reports | Plan Integrity | Find | View | Print Map | Email Plan | Share Plan | Submit Plan | Help | Contact Us | Log Out

Demo Draft 1 - mozdoug

www.caipr.com Thu Dec 7 04:08:26 2017

Redistricting Toolbox - Demo Draft 1

Target: New District

Source: All

Selection: Census Block

Pending Change

District	New
Population	0
Change - Population	0
Ideal Value	49,475
Deviation	-49,475
% Deviation	-100.0%
[Hispanic Origin]	0
Change - [Hispanic Origin]	0
% [Hispanic Origin]	0
NH_Whit	0
Change - NH_Whit	0

Map Legend

Themes: Layers

Theme: None

Redraw Map

Districts in Plan: 0; Target: 4; Ideal Population: 49,475

District	Population	Deviation	% Deviation	[Hispanic Origin]	% [Hispanic Origin]	NH_Whit	% NH_Whit	NH_DOJ_BIK
1	107,900	148,424	300.0%	145,554	73.6%	20,410	14.0%	5,206

Scale: 1 : 199,264

Powered by Maptitude for the Web

Public Hearing & Discussion



Identify and discuss “communities of interest”

- ❑ What is your neighborhood and what are its boundaries?
- ❑ What other notable areas are in the City and what are their boundaries?
- ❑ Any questions about the mapping tools?